



## 3G-DL33RA

3.3" ROUND ADJUSTABLE  
TRIM & TRIMLESS



3.3" adjustable high performance downlight  
Hot aiming with 0°-40° lockable tilt and 362° lockable rotation  
Regressed LED source for enhanced glare control  
Lumen range of 1000lm to 3000lm (80+, 90+, and 97+ CRI options)  
Shallow housing available along with other housing options  
1% dimming standard with several driver options

### ORDERING INFORMATION

PROJECT:		TYPE:	
CATALOG #:		DATE:	

CAT. NO	LUMEN OUTPUT	CRI	COLOR TEMP	BEAM ANGLE	VOLTAGE
3G-DL33RA	10 - 1000 LUMENS	S80 - 80+CRI (STANDARD)	27K - 2700K	20D - 20° <sup>2</sup>	UNV - 120/277V <sup>3</sup>
	15 - 1500 LUMENS	H90 - 90+CRI <sup>1</sup>	30K - 3000K	40D - 40°	120 - 120V <sup>4</sup>
	22 - 2200 LUMENS	H97 - 97+CRI <sup>1</sup>	35K - 3500K	60D - 60°	277 - 277V
	30 - 3000 LUMENS		40K - 4000K		347 - 347V (0-10V ONLY)
	40 - 4000 LUMENS				

DRIVER	FLANGE TYPE	BEVELED INSERT	HOUSING TYPE	OPTIONS
DIM - 0-10V (STANDARD 100-1%) DHL2 - LUTRON HI-LUME LDE (100-1% ECOSYSTEM) DALI - DALI (100-1%) LE - PHASE DIMMING <sup>4</sup> (TRIAC/ELV, 100-1%, 120V ONLY)	WT - WHITE BT - BLACK XTR - TRIMLESS <sup>5</sup>	WI - WHITE SI - SILVER BI - BLACK	RMD - REMODEL (NON-IC) NCF - NEW CONSTRUCTION FRAME (NON-IC) SH - SHALLOW HOUSING <sup>6</sup> (IC RATED & CP RATED) NC - NEW CONSTRUCTION HOUSING (NON-IC & CP RATED)	CP - CHICAGO PLENUM <sup>7</sup> AT - AIRTIGHT HOUSING <sup>8</sup> SF60 - SOFTENING LENS <sup>5</sup> SB60 - SANDBLASTED LENS LS60 - LINEAR SPREAD EMR - EMERGENCY BATTERY <sup>9</sup>  Maximum 1 optical accessory

<sup>1</sup> 90+ CRI and 97+ CRI available up to 2200lm

<sup>2</sup> 20D reflector available up to 2200lm

<sup>3</sup> Universal voltage (120/277) available up to 2200lm

Not available with "LE" Phase dimming driver option

<sup>4</sup> Forward phase/Reverse phase driver available in 120V only

<sup>5</sup> Trimless model provided standard with softening lens

<sup>6</sup> Shallow Housing (IC Rated and Chicago Plenum Rated) available up to 2200lm

<sup>7</sup> Chicago Plenum option available with Shallow Housing (2200lm max) and New Construction Housing

<sup>8</sup> Airtight Housing option available with Shallow Housing only (2200lm max)

<sup>9</sup> Emergency battery installed remotely by others

Not accessible through the inside of the fixture

### PERFORMANCE CHART BASED ON SOFTENING LENS

#### 80+ CRI (Based on 35K and 60° Beam Angle)

LUMEN OUTPUT	SYSTEM WATTS	DELIVERED LUMENS	EFFICACY LM/W
1000 LUMENS	10.3	874	85
1500 LUMENS	14.3	1200	84
2200 LUMENS	22.5	1780	79
3000 LUMENS	31.2	2183	70
4000 LUMENS	43.5	2849	66

#### 90+ CRI (Based on 35K and 60° Beam Angle)

LUMEN OUTPUT	SYSTEM WATTS	DELIVERED LUMENS	EFFICACY LM/W
1000 LUMENS	10.3	769	75
1500 LUMENS	14.3	1056	74
2200 LUMENS	22.5	1566	70
3000 LUMENS	31.2	1921	62
4000 LUMENS	43.5	2508	58

#### 97+ CRI (Based on 35K and 60° Beam Angle)

LUMEN OUTPUT	SYSTEM WATTS	DELIVERED LUMENS	EFFICACY LM/W
1000 LUMENS	10.3	717	70
1500 LUMENS	14.3	984	69
2200 LUMENS	22.5	1460	65
3000 LUMENS	31.2	1790	57
4000 LUMENS	43.5	2337	54

LUMEN OUTPUT ADJUSTMENT FACTORS: (27K=0.945) (30K=0.985) (35K=1.00) (40K=1.01)

EDITION 01/20

**TECHNICAL****HOUSING**

Remodel, new construction frame, IC housing, and Shallow housing options available

Maximum ceiling thickness of 1". Consult factory for modifications

All housing options designed to be easily converted in field to trim or trimless with minimal components

Housings are rated for #12 AWG, (4 in, 4 out), 90°C conductors and through branch wiring

**BEVELED INSERT**

3.3" aperture with regressed LED source for enhanced glare control

Machined aluminum beveled insert with powder coated finish

**TRIM**

Machined aluminum trim flange with powder coated finish and minimal 0.375" overlap

**TRIMLESS**

Mudding flange with integral blocking support installs flush with ceiling

**ADJUSTABILITY**

Proprietary hot-aiming mechanism with sliding center beam optimization

0°-40° lockable tilt and 362° lockable rotation with Phillips screwdriver

**OPTICS**

Proprietary anodized, aluminum reflectors are field replaceable

Available in 20°, 40° and 60°

Trimless model provided standard with softening lens

**ELECTRICAL**

Standard 0-10V, 100-1% dimming and 0.9 power factor

Lutron EcoSystem and eldoLED Dali options available with 100-1% dimming

120V Forward Phase/Reverse Phase driver option with 100-1% dimming

All drivers are integral and easily accessible through the aperture

Emergency Battery: 90 minutes (remote only)

**LED SYSTEM**

Citizen LED module (field replaceable)

Color consistency < 2 SDCM

Standard (80+CRI). Optional (90+ and 97+CRI)

Available in 27K, 30K, 35K, and 40K

L90 > 50,000 hours at 105°C

5 year warranty

**MOUNTING**

Trim fixture designed for use in drywall, wood, acoustic ceiling tiles, and other ceiling materials

Trimless fixture designed for use in drywall, mud-in ceiling applications

Recommended ceiling cut-out: (3 13/16" Ø) All housing options

All housing options ship standard with bar hangers (14" to 26" extension)

**LISTING**

ETL listed and tested to UL standards. Suitable for dry and damp locations

**WARRANTY**

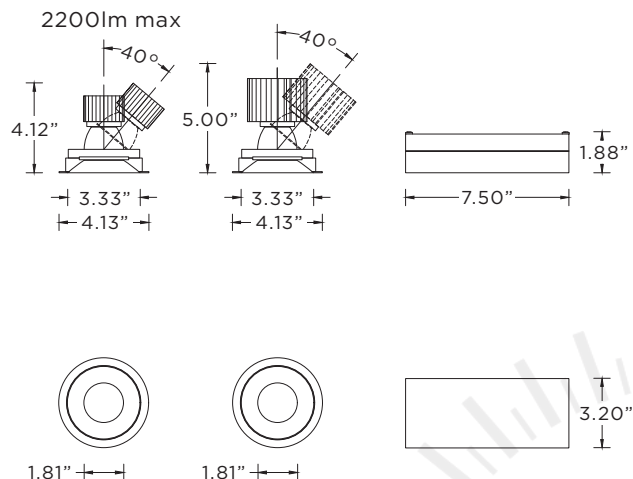
5 Year warranty on LED and drivers

Manufacturer 1 year warranty for defects in material and workmanship under normal use

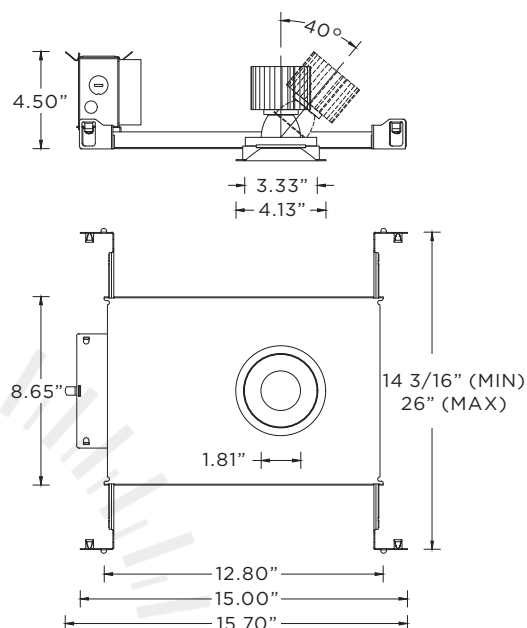
Ambient temperature at fixture should not exceed 25°C

### TRIM HOUSING OPTIONS

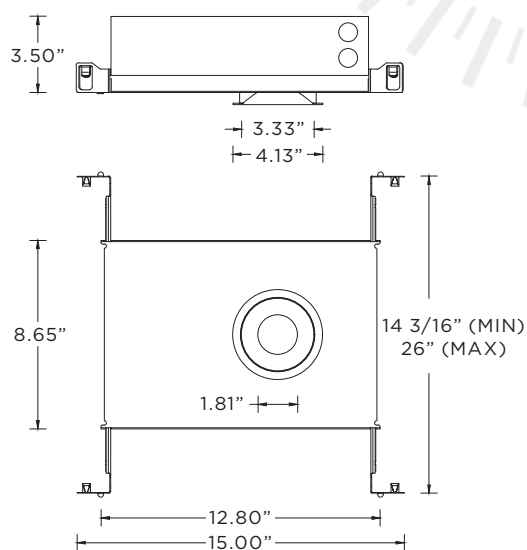
#### RMD - Remodel (Non-IC) (3000lm max)



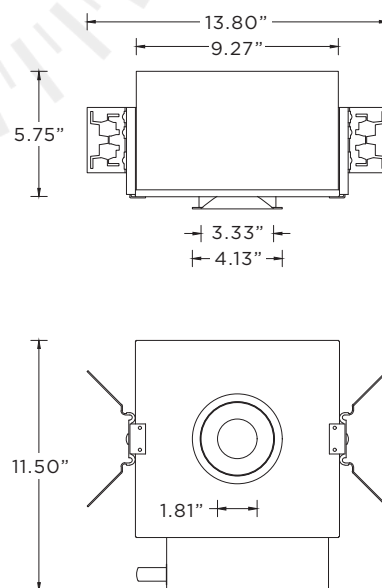
#### NCF - New Construction Frame (Non-IC) (3000lm max)



#### SH - Shallow Housing (IC and Chicago Plenum Rated) (2200lm max)

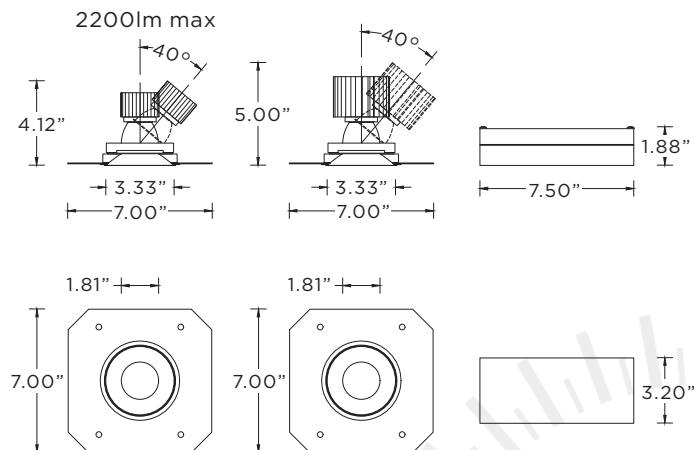


#### NC - New Construction Housing (Non-IC) (Chicago Plenum Rated)

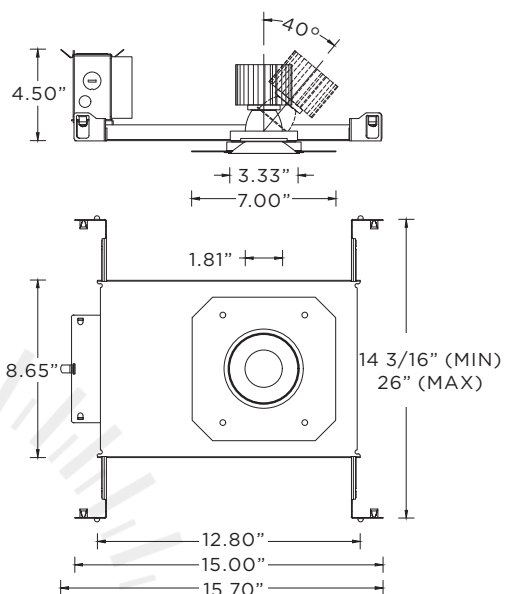


### TRIMLESS HOUSING OPTIONS

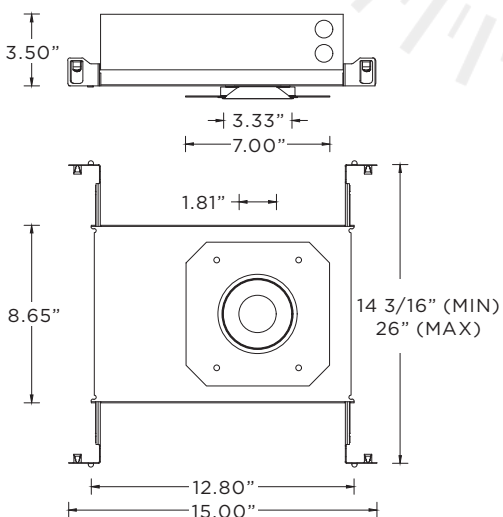
#### RMD - Remodel (Non-IC) (3000lm max)



#### NCF - New Construction Frame (Non-IC) (3000lm max)



#### SH - Shallow Housing (IC and Chicago Plenum Rated) (2200lm max)



#### NC - New Construction Housing (Non-IC) (Chicago Plenum Rated)

