


# HOPE

design Francisco Gomez Paz / Paolo Rizzatto, 2009

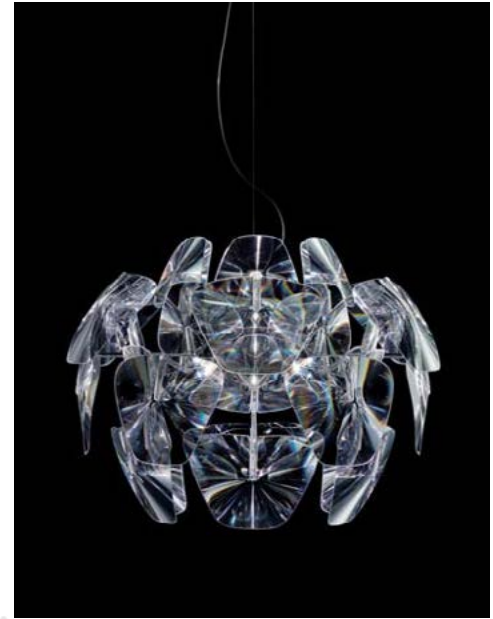
**LUCE  
PLAN**

- Type: Suspension
- Light source: D66/12 - D66/18 - D66/42 - D66/105  
150W A-21 med.base  
150W T-10 halogen shielded med. base  
23W CFEL med. base
- Product use: Indoor
- Materials: Structure in polished stainless steel and polycarbonate arms, polycarbonate prismatic lenses
- Colors: Transparent
- Description: Incredibly light and easy to dismantle, Hope presents the magic of traditional chandeliers, reinterpreting them with sophisticated modern technologies and contemporary materials. A series of thin polycarbonate Fresnel lenses multiply the light from the light source, recreating a pleasant, glittery and party-like atmosphere, sprinkled with thousands of tiny reflections.

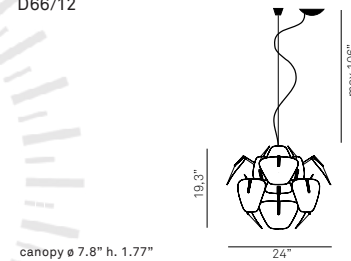
Certifications: 

Awards: Red Dot Design Award, 2010  
Good Design Chicago Athenaeum, 2010  
Premio dei Premi, 2011  
Compasso d'Oro ADI, 2011

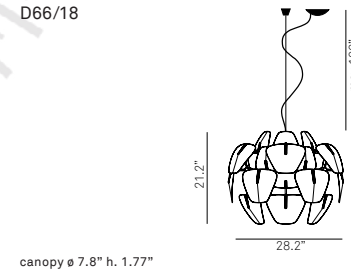
Reference code: 1D6612S00500 D66/12  
1D6618S00500 D66/18  
1D6642S00500 D66/42  
1D66105S00500 D66/105



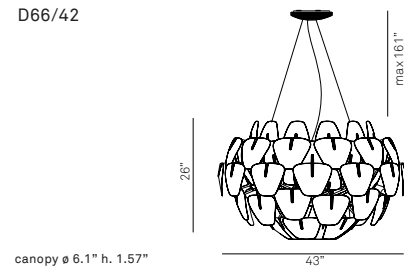
D66/12



D66/18



D66/42



D66/105

